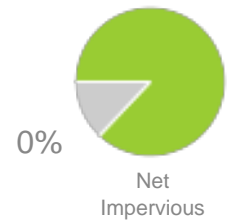


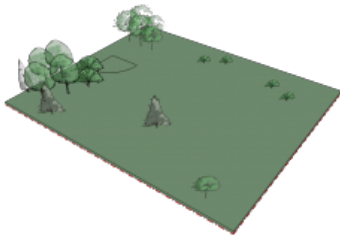


## Valdez Park

Level turf park with treeline along adjoining single-family neighbourhood



Case # 12001-00



### TREE CANOPY

12 %

### ONSITE PARKING

0 m<sup>2</sup>

### PEDESTRIAN CIRCULATION

0 m<sup>2</sup>

### VEHICLE CIRCULATION

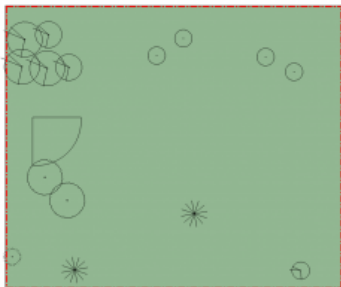
0 m<sup>2</sup>

### NUMBER TREES

19

### TREE CANOPY AREA

914 m<sup>2</sup>



### SITE AREA

7698 m<sup>2</sup>

### NET IMPERVIOUS

0 m<sup>2</sup>

### PERVIOUS PAVING

0 m<sup>2</sup>

### SHRUB

0 m<sup>2</sup>

### TURF

7545 m<sup>2</sup>

### WATER

0 m<sup>2</sup>

### BUILDING FOOTPRINT

0 m<sup>2</sup>